

APPLIED UNITS OF THE DEPARTMENT

- Laboratory Nursery School: *Chetan Balwadi*
- *Unnayan*: Human Development Assessment & Support Center
 - Dr. Pramila Phatak Diagnostic and Training Center
 - Early Child Development-Learning Resource Center (ECD-LRC)
 - Youth Study and Support Center (YSSC)

AREAS OF RESEARCH

Taking a life span perspective, research in the department describes and explains human development and behavior across different domains and contexts.

EARLY CHILD DEVELOPMENT

- Cultural Pathways
- Development Pathways
- Social Competence
- Moral Development
- Play Patterns
- Media Studies
- Indigenous Curriculum
- Values
 - Wisdom & Forgiveness

YOUTH STUDIES

- Emerging Adulthood
- Civic Engagement
- Gandhian Philosophy
- Romantic Relationships
- Life Goals & Aspirations
- Social-Moral Development
- Parent-Adolescent Relationships
- Religiosity & Identity

GENDER STUDIES

- Self-Esteem & Empowerment
- Reproductive Health
 - Infertility
 - Surrogacy
 - Subjective experiences of women with HIV-AIDS
 - Counselling Practices for MSM HIV-AIDS Clients

FAMILY

- Fatherhood & Motherhood
- Marriage and Partner Selection
- Situation of Older Persons
- Value Inculcation
- Domestic Violence
- Divorce

SCHOOLING AND LITERACY

- Emerging Literacy
- Quality Indicators in Government Schools
- Joyful Learning in Grades 1 and 2

SPECIAL NEEDS

- Family Coping Strategies
- Child Life Program
- Integration of Children with Special Needs

CAREER OPPORTUNITIES

The theory, research, practice feedback loop makes our students better grounded in theory and field reality. They become competent in conducting research, planning and evaluating programs, documentation and consultancy. The programs prepare students for effective theory based field application.

ACADEMICIANS AND RESEARCHERS in recognized national and international universities, and research institutes.

DIRECTORS, PROGRAM MANAGERS, COORDINATORS, SUPERVISORS for planning, implementing and monitoring basic services for children, adolescents, older persons and their families.

EDUCATIONAL CONSULTANTS AND TRAINERS in leading educational institutions, child care settings and NGOs.

CHILD LIFE SPECIALISTS AND COUNSELORS in hospitals and health care settings.

TRAINERS OF GRASSROOTS FUNCTIONARIES in various state and national level programs.

ENTREPRENEURS of educational products for children, centers for early childhood care and education.



Department of Human Development and Family Studies
Faculty of Family and Community Sciences
The Maharaja Sayajirao University of Baroda
Vadodara - 390 002. Gujarat (India)
Tel. +91-265-2793984 email: cas.hdfs@gmail.com

Designed by Lalita, Vadodara

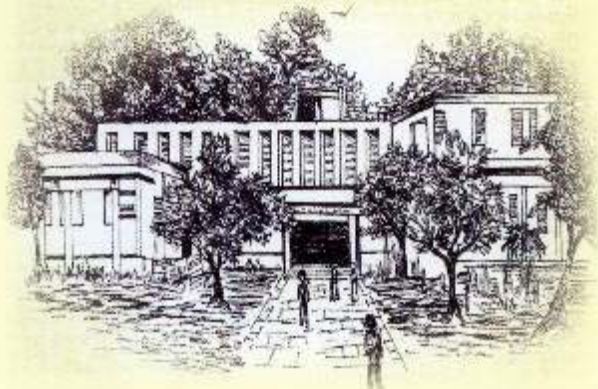
DEPARTMENT OF HUMAN DEVELOPMENT AND FAMILY STUDIES

DEPARTMENT OF HUMAN DEVELOPMENT AND FAMILY STUDIES



Touching Lives...
Infants to Older Persons

Center of
Advanced Study in
Human Development



The Department of Human Development and Family Studies (HDFS) is one of India's pioneer departments in the field since its inception in 1949. From modest beginnings as a laboratory nursery school, today it is a premier institute offering five programs of study in Human Development and Family Studies. In 2003 the department was recognized as a Center for Advanced Study (CAS) by the University Grants Commission (UGC), New Delhi under the program of special assistance to select university departments. It is the first and only department of Home Science in the country to receive this recognition.

At present the department offers the following programs of study

- Bachelors degree in HDFS
- Postgraduate diploma in Early Childhood Care and Education
- Masters degree in HDFS
- Master of philosophy in HDFS
- Doctorate in HDFS

SALIENT FEATURES OF THE CURRICULUM

- Conscious attempts to integrate theory, research and application in the curriculum.
- Continuous review to update the curriculum with advances in the field.
- Integration of cross-cultural and gender perspectives in human development.
- Interweaving of multidisciplinary perspectives from allied disciplines like psychology, women's studies, social work, education, sociology, and special education.



NEHRU CHAIR VISITING FACULTY PROGRAM

The department has a Nehru Chair Visiting Faculty Program which enables visits of eminent national and international scholars. Students and faculty get the opportunity to interact closely with different scholars to make it a mutually beneficial experience



TEACHER - STUDENT INTERACTION

Interactive methodology in teaching and evaluation, aims to

- Enhance subject matter understanding
- Encourage reflective and analytical thinking in students
- Inculcate leadership in students

A collective ethos of sharing through classroom discussions, seminars, and symposia strengthens the curriculum.

DEPARTMENT FACILITIES

• Library

The Department has its own collection of books and journals which are accessible to students and faculty. The journal collection constitutes both national and international volumes in the area of Human Development and Family Studies. The library also has copies of graduate students' theses and dissertations.

• Computer Laboratory

The Department has a student computer laboratory with internet facilities and quantitative and qualitative data analysis tools.

COMMUNITY OUTREACH

The community outreach programs of the department have been instrumental in establishing linkages with local and state level organizations for community development, by initiating innovative programs and strengthening ongoing programs in the state.

